

NATURE X

A NEW HOPE FOR WILDLIFE CONSERVATION

智能動物保育守護者

作品編號
Work Number

001637

作者
Author

陳泓齊 HUNG CHI CHEN

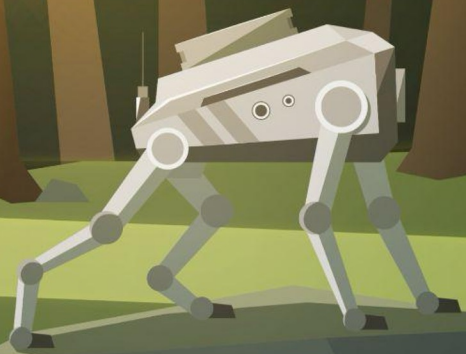
共創團隊
Collaborative Team

二樓設計 27 DESIGN

NATURE X

A NEW HOPE FOR WILDLIFE CONSERVATION

智能動物保育守護者



NATURE X 可以融入動物中，深入觀察 紀錄動物們並從各個層面上保護動物們

NATURE X can integrate into the world of animals, closely observe and record their behaviors, and protect them from various perspectives

NatureX能利用3D全息投影變身為各種動物融入動物中觀察紀錄動物們的動態影像，它可以即時發現健康異常的動物採取救援行動，並利用AI智能為野生動物建立“專屬檔案”建立大數據資料庫。NatureX的大數據資料庫會建立“DATA MAP”用地圖的方式顯示各項動物的生存範圍、總數、以及性別年齡分佈。它也能利用數據分析提早預測動物的瀕危的可能性並找到問題點，提供資訊給政府進行決策與保育行動！

NatureX can use 3D holographic projection to transform into various animals and blend into their environment, allowing for real-time observation and recording of dynamic images of wildlife. It can instantly detect animals with health anomalies and take rescue actions, while using AI intelligence to create individual profiles for wild animals and build a big data database. NatureX's big data database establishes a 'DATA MAP' that displays the habitat areas, total population, and gender-age distribution of various animals in a map-like format. It can also use data analysis to proactively predict the likelihood of animals becoming endangered and identify issues, providing valuable information for government decision-making and conservation efforts !

NATURE X 裝置介紹

NATURE X introduction



全息投影功能

HOLOGRAPHIC PROJECTION

Nature X的背部與兩側能投射全息圖像，在周圍環境中投射極為逼真的動物外型，且能搭配AI智能辨識鏡頭可以變幻成各種不同動物

Nature X with the ability to project highly realistic animal shapes into the surrounding environment from its back and sides, combined with AI-powered recognition cameras, can transform into various different animals.

AI 智能辨識鏡頭

AI INTELLIGENT RECOGNITION CAMERA

這種鏡頭配備了人工智慧技術，可以識別和分析攝像頭拍攝的圖像或影片，可應用於動物識別、情緒識別、動作識別等。

This camera is equipped with artificial intelligence technology, capable of recognizing and analyzing images or videos captured by the camera. It can be applied to animal recognition, emotion recognition, motion recognition.

太陽能充電功能

SOLAR CHARGING FUNCTIONALITY

Nature X的體內藏有折疊的太陽充電板讓它能永續的進行活動，當感測到電量過低時，Nature X可以展開太陽能板進行充電！

Nature X has a built-in foldable solar charging panel that allows it to sustain its operations indefinitely. When it detects low battery levels, Nature X can deploy the solar panel to recharge itself

衛星無線傳輸功能

SATELLITE TRANSMISSION FUNCTIONALITY

Nature X擁有衛星無線傳輸功能能遠端將拍攝的影像與分析的動物數據傳送到大數據的資料庫中，並且資訊可以同步更新給每隻Nature X機器人！

Nature X has satellite wireless transmission capabilities, allowing it to remotely transmit captured images and analyzed animal data to a big data database. Furthermore, this information can be synchronized and updated across all Nature X robots!

01

利用3D全息投影變身 為各種動物融入動物中

Transforming into various animals through
3D holographic projection to blend in with
the animal world

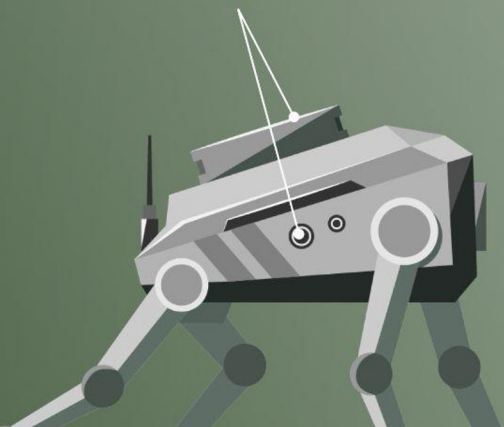


Nuture X通過背上以及兩側的全息投影器能夠投影出超擬真的動物外型，Nature X能以近距離觀測動物，同時搭配前方的AI智能辨認功能，讓它能自由地切換動物的形態！

Nuture X is equipped with holographic projectors on its back and sides, capable of projecting hyper-realistic animal forms. It allows Nature X to observe animals up close while utilizing AI-powered recognition features in the front, enabling it to freely switch between different animal forms.

“全息投影裝置”

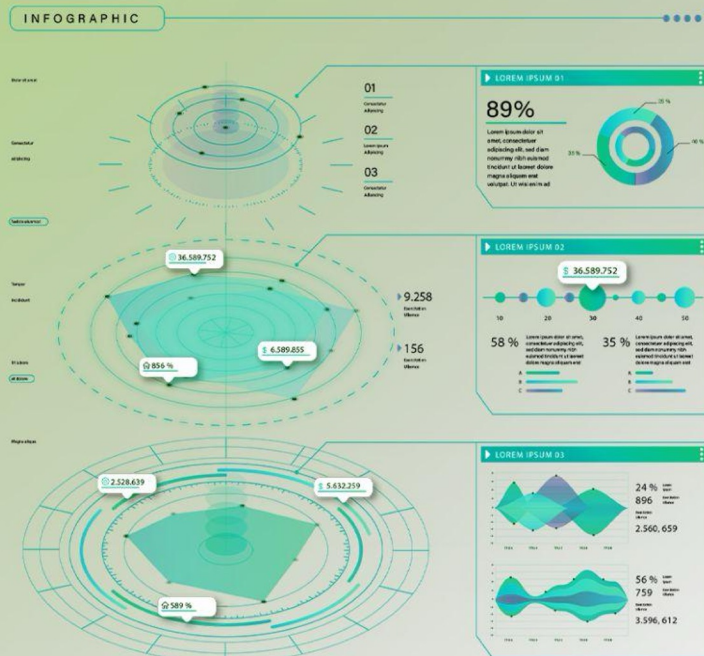
Holographic Projection Device



02

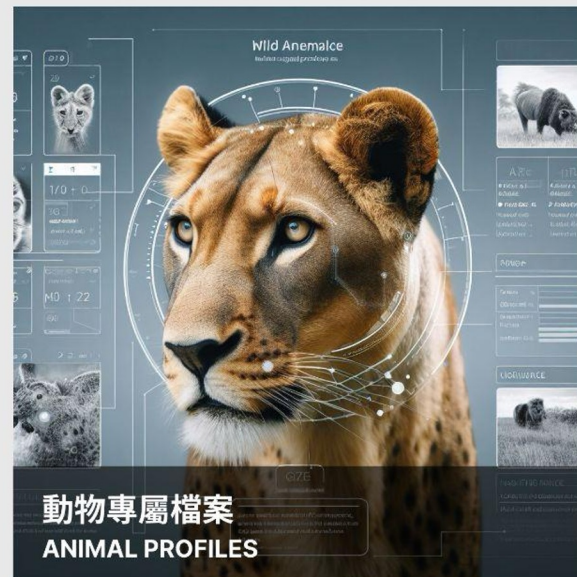
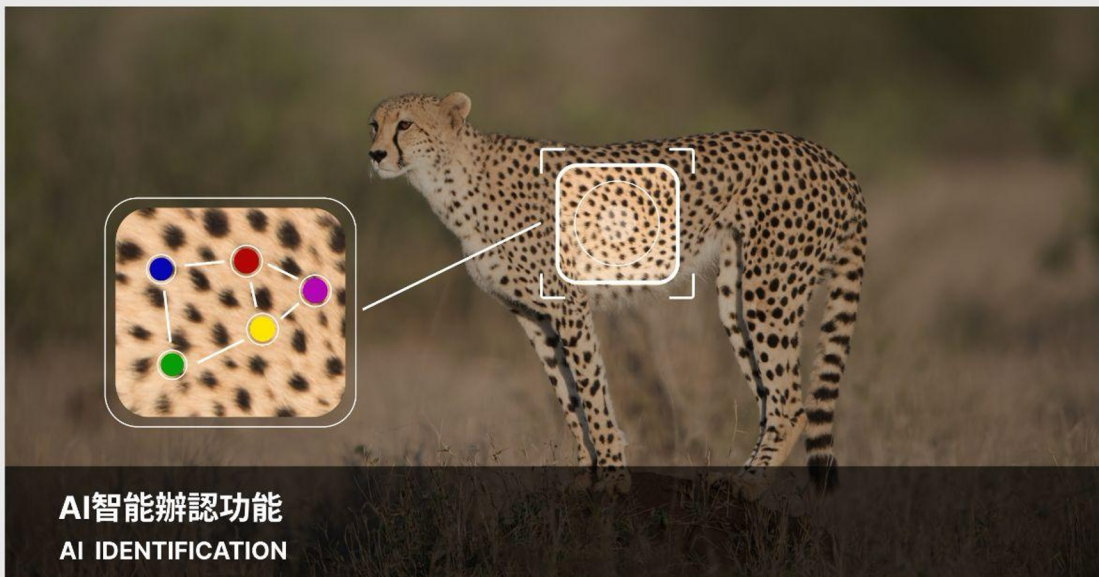
利用AI智能、大數據分析 替野生動物建立“健康指數檔案”

Utilizing AI intelligence and big data analysis to establish
'Animal Profiles' for wild animals



Nature X通過感測器以及AI智能辨認動物的種類來進行分析，**為每隻野生動物創立專屬檔案。**
專屬檔案包含體型、年齡、性別、活動範圍以及**健康異常分析**。當AI智能透過動態捕捉分析發現某隻野生動物的健康狀況有異常（受傷、明顯營養不足等），會立即傳送急救訊息與定位給相關單位，協助救援動物！

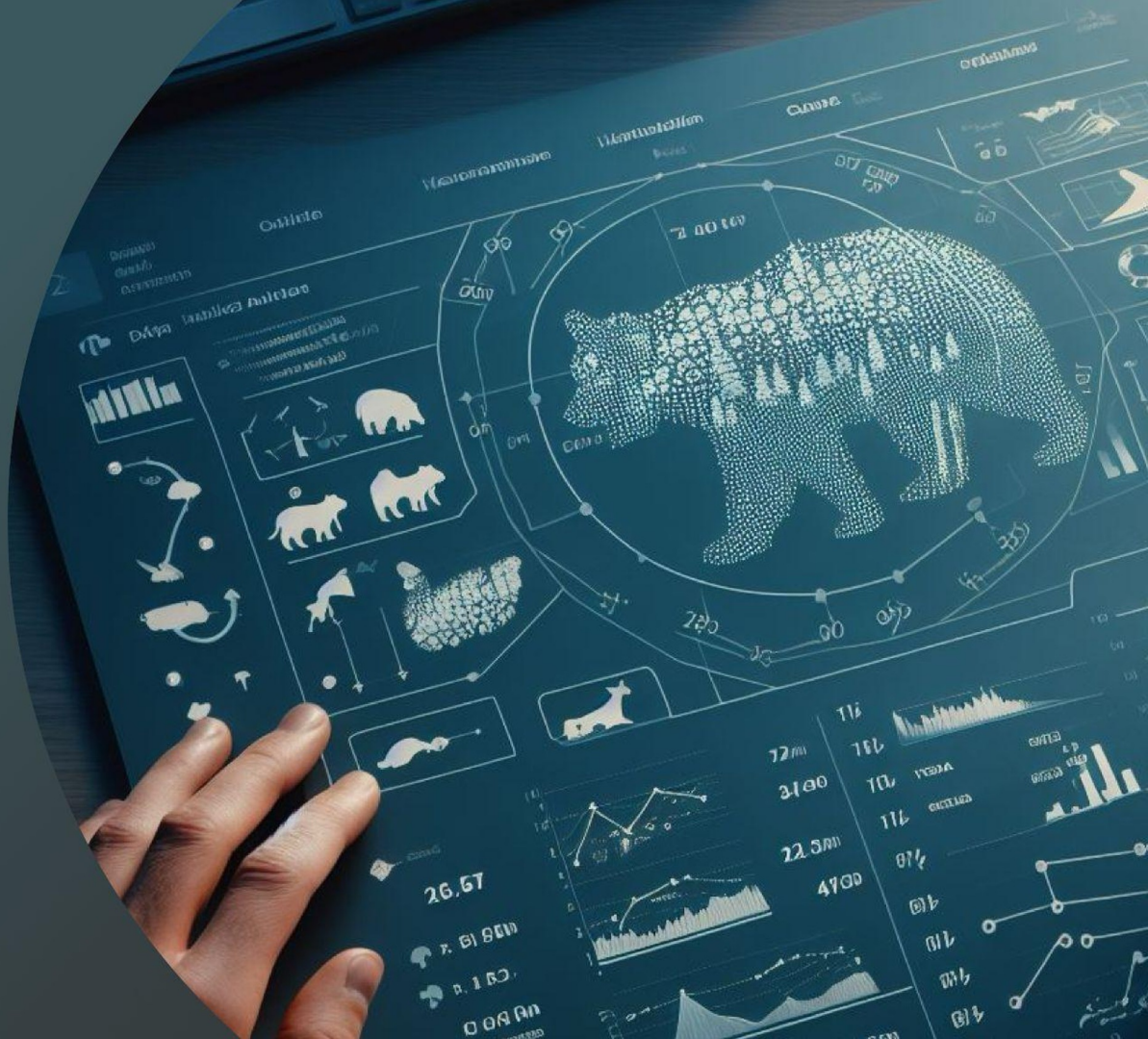
Nature X utilizes sensors and AI intelligence to recognize and analyze the species of each wild animal, **creating individual profiles** for them. These profiles include information such as size, age, gender, habitat range, and **health anomaly analysis**. When AI intelligence, through real-time monitoring, detects an abnormal health condition in a particular wild animal (injured, visibly malnourished, etc.), it immediately transmits an emergency message with the location to the relevant authorities, facilitating animal rescue.



03

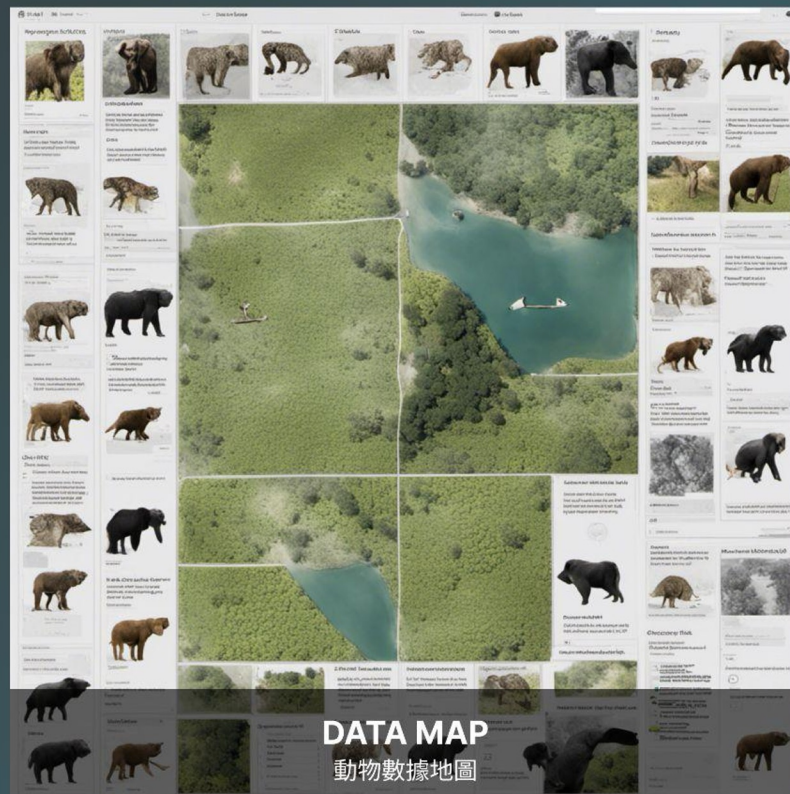
“DATA MAP”預測動物的瀕危可能性，協助政府進行保育決策

“DATA MAP” predicts the likelihood of animals becoming endangered, assisting the government in making conservation decisions.”



大數據資料庫經過長時間的累積會建立“DATA MAP”。DATA MAP 是以地圖的方式紀錄各項動物的生存範圍面積、總數、以及性別年齡分佈等生態數據。並用大數據計算的方式計算各種動物的“健康指數”，它利用數據分析提早預測動物的瀕危的可能性並找到問題點，提供資訊給政府進行決策與保育行動

After long-term accumulation, the big data database creates a “DATA MAP”. The DATA MAP is a map-like representation of ecological data, including the habitat areas, total population, and gender-age distribution of various animal species. Using big data analytics, it calculates the 'Health Index' for different animals. It can utilize data analysis to early predict the likelihood of animals becoming endangered and pinpoint issues, providing information for government decision-making and conservation efforts





未 來 影 響
The Future Impact

01

動物保育政策革新

“Revolutionizing Wildlife Conservation Policies”



Nature X的Data Map數據將現今的動物保育等級數值化，並能預測未來動物的健康指數曲線，讓政府能提早制定保育政策與法條

“Data Map” digitizes current animal conservation ratings and can predict future animal health index trends, allowing the government to proactively formulate conservation policies and regulations

02

防範非法獵捕行為

“Preventing Illegal Poaching Activities”



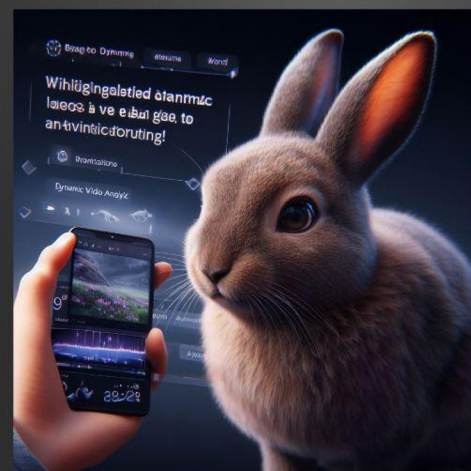
Nature X的ai 辨識功能可以識別出非法獵捕者的身分並錄製下獵捕的證據畫面，讓非法獵捕者難逃法網，大量降低非法獵捕數

Nature X's AI recognition feature can identify the identity of illegal poachers and record evidence of their activities, making it difficult for illegal poachers to escape justice and significantly reducing the incidence of illegal hunting.

03

未來與動物溝通

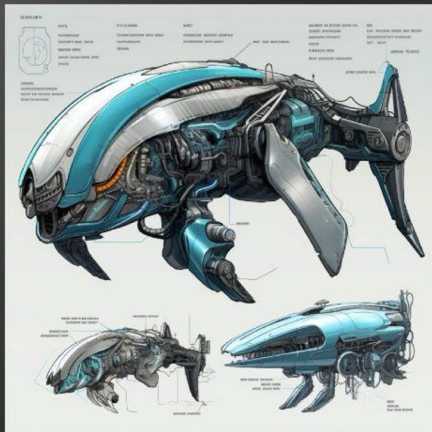
“Communicating with Animals in the Future”



Nature X收集的大量動態影音，利用大數據與動態影音分析，我們未來將有可能翻譯動物的語言甚至能與動物們進行溝通交流！

With the extensive collection of dynamic videos by Nature X and the use of big data and dynamic video analysis, in the future, it might be possible to translate the language of animals and even engage in communication and interaction with them!

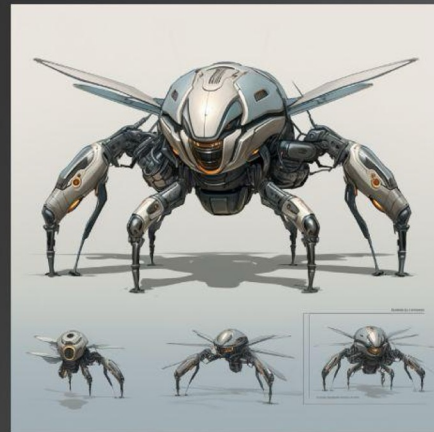
FUTURE PLAN



NatureX - A10

水生型保育守護者

Guardians of Aquatic Conservation



NatureX - F12

空中型保育守護者

Guardians of Aerial Conservation